

K-FLEX® ST DUCT



K-FLEX® ST DUCT

- ▶ Elastomeric insulation sheets for air ducting
- ▶ Specially designed for isolation of ventilation ducts
- ▶ 1.5m width reduces installation times
- ▶ Adhesive coating

Site



Video



App. Manual



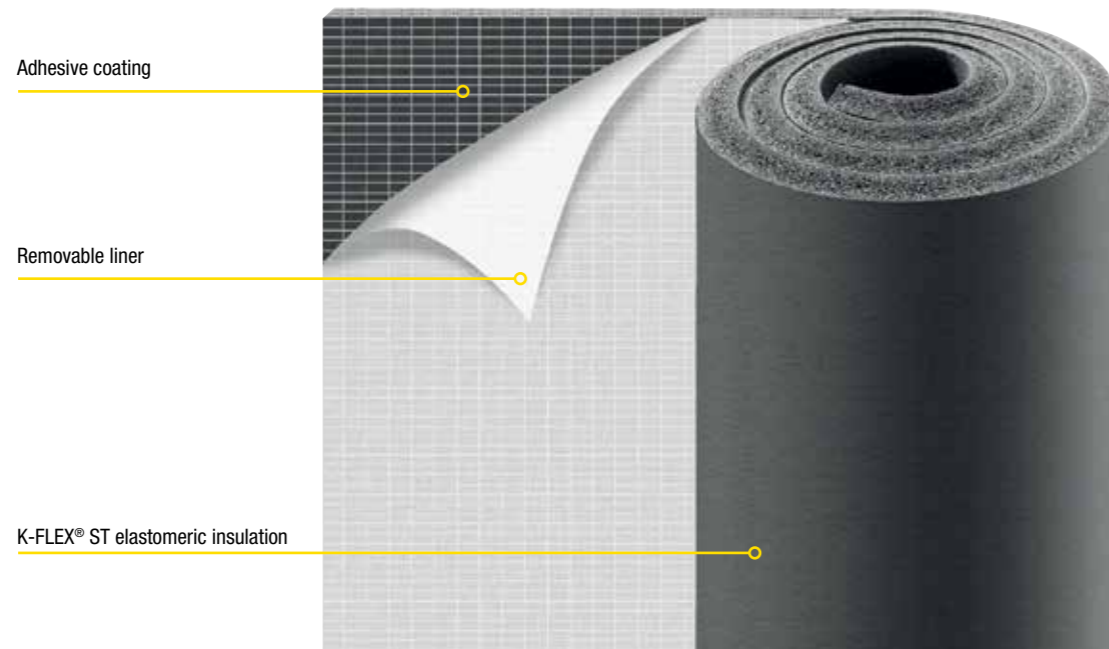
TECHNICAL DATA



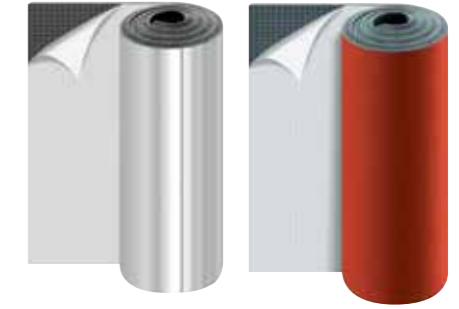
K-FLEX® ST DUCT ▶ TECHNICAL DATA		
Property ▼	Value ▼	Test method ▼
Temperature range	From -40 °C to +85 °C	EN 14706 EN 14707
Thermal conductivity λ W/(m•K)	Thicknesses \leq 25mm -20 °C = 0,031 0 °C = 0,033 +20 °C = 0,035 +40 °C = 0,037	EN 13787 EN 12667
	Thicknesses $>$ 25mm -20 °C = 0,034 0 °C = 0,036 +20 °C = 0,038 +40 °C = 0,040	
Corrosion prevention	pH neutral (7 \pm 0,5)	EN 13468
Permeability μ	\geq 7000	EN 12086
Fire rating	Euroclass B-s3, d0	EN 13501-1
Ecological data	Without CFCs and HCFCs	

K-FLEX® reserves the right to change data and technical requirements without notice.

PRODUCT FEATURES



GENERAL INFORMATION



K-FLEX® ST DUCT

K-FLEX® ST DUCT is specifically produced for the insulation of ventilation and air-conditioning ducts, meeting all the necessary requirements in terms of structure and dimensions. Economical: flexible and easy to handle, it is made in measurements of 1500 mm in width to ensure easy installation on ducts.

Practical: the self-adhesive surface has been made rougher to improve its grip on the metal ducts.

Convenient: its 1500 mm width cuts down on application time, reducing the final cost of pre-fabricated ducts.

Flexible: high elasticity helps attenuate vibrations that occur where there are joints and suspensions.

K-FLEX® ST DUCT + FINISHES

K-FLEX® ST DUCT ALU

Elastomeric self-adhesive sheet with reinforced mesh and a smooth aluminium 80 μ thick covering. Width: 1500 mm. Euroclass C-s3,d0

K-FLEX® ST DUCT AL CLAD SYSTEM Elastomeric self-adhesive sheet, with reinforced mesh and AL CLAD covering. Width: 1500 mm. Euroclass D-s3,d0

K-FLEX® ST DUCT COLOR SYSTEM Elastomeric self-adhesive sheet, with reinforced mesh and COLOR coating. Width: 1500 mm. Euroclass C-s3,d0

K-FLEX® ST DUCT ▶ RANGE		
	Thicknesses ▼	Height ▼
K-FLEX® ST DUCT - Sheets	6-8-10-12-15-20-30 mm	1500 mm



PROJECTS

Italy, Rimini
Mall "Le Befane"

